

DML/RML

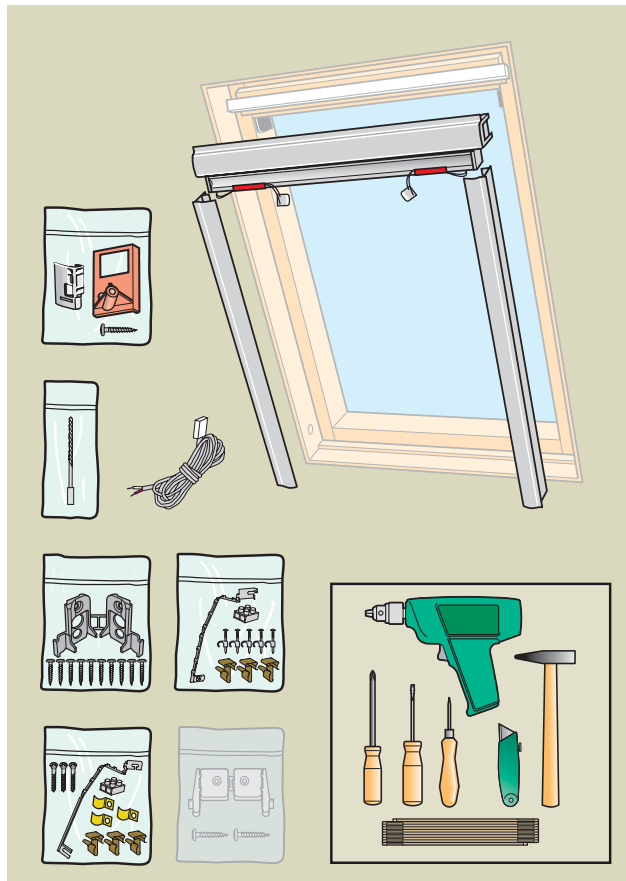
VELUX®



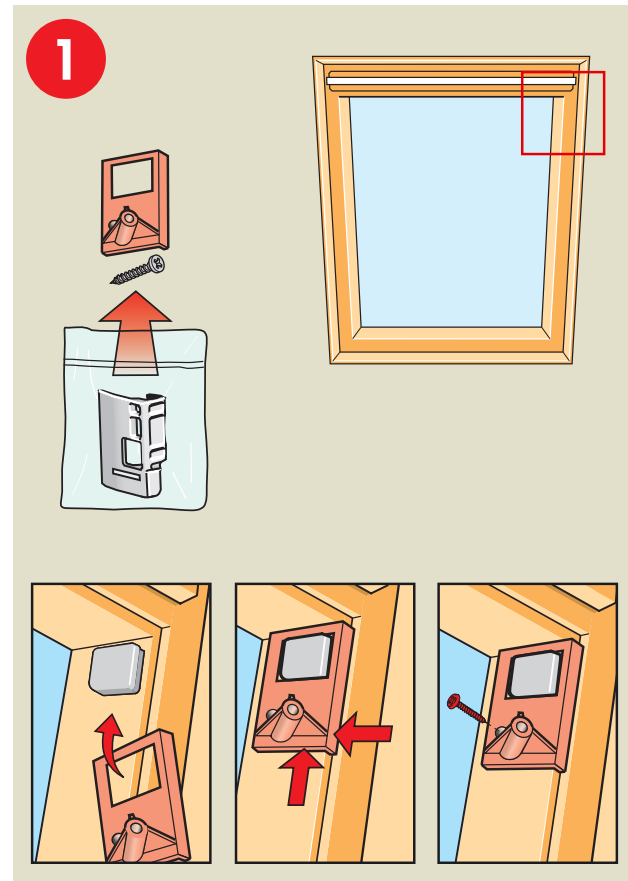
CE



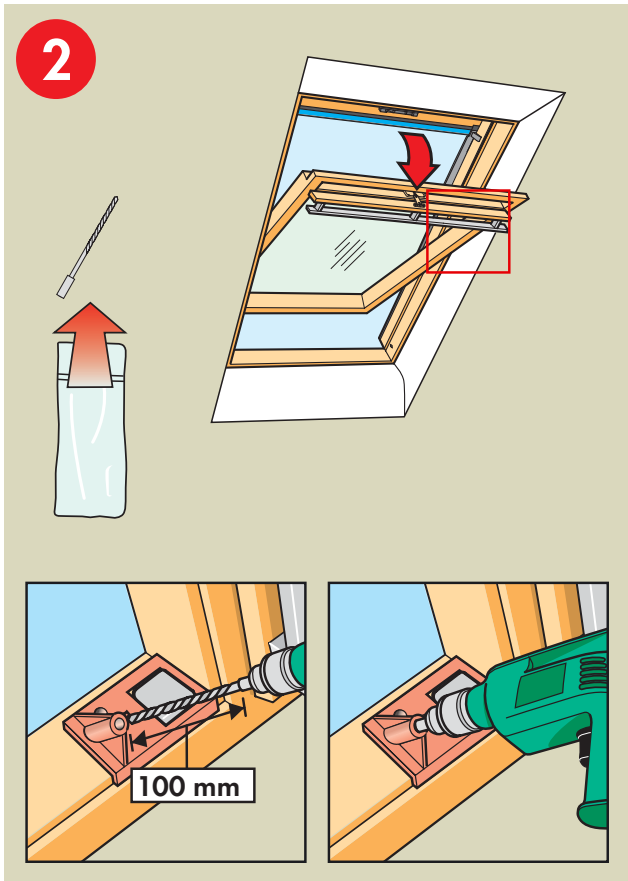
451422



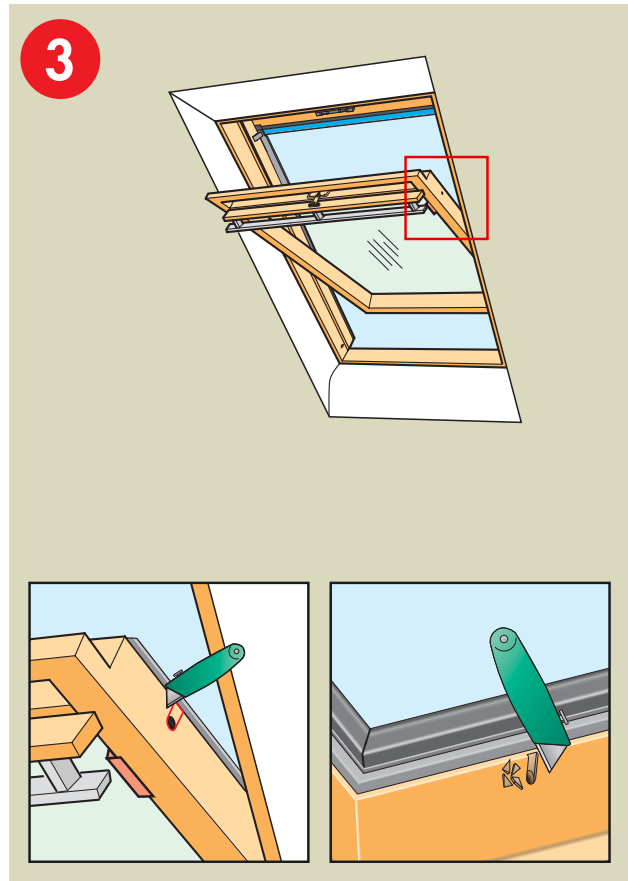
2



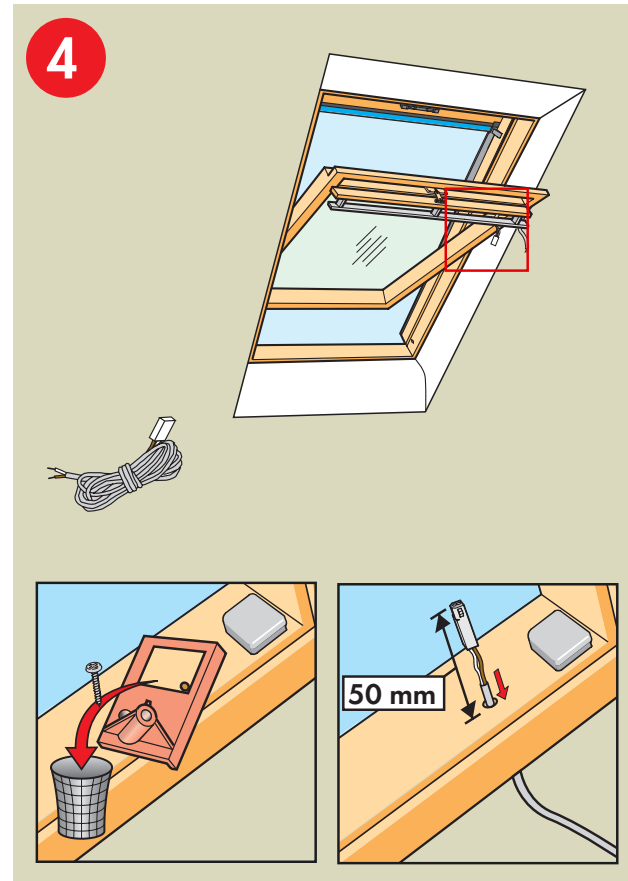
3



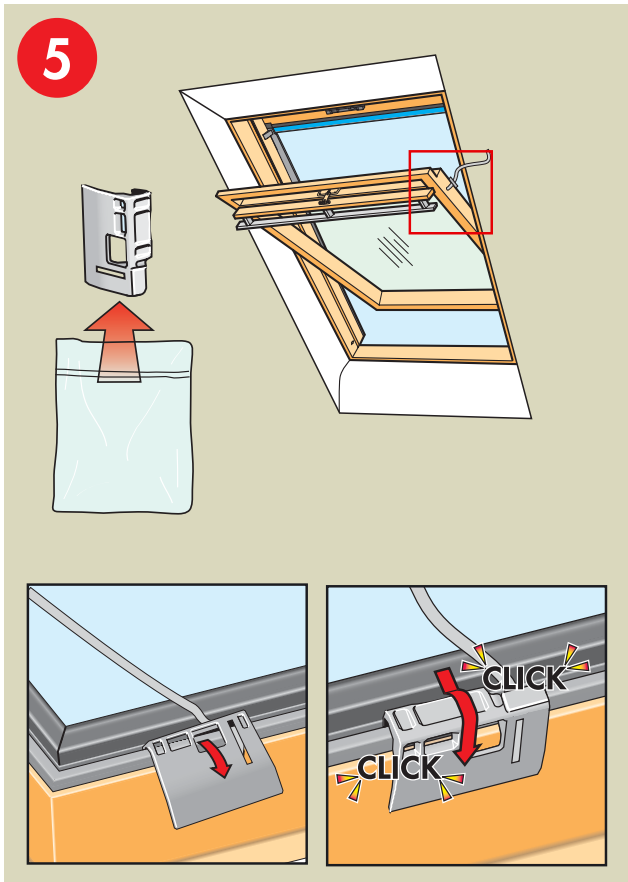
4



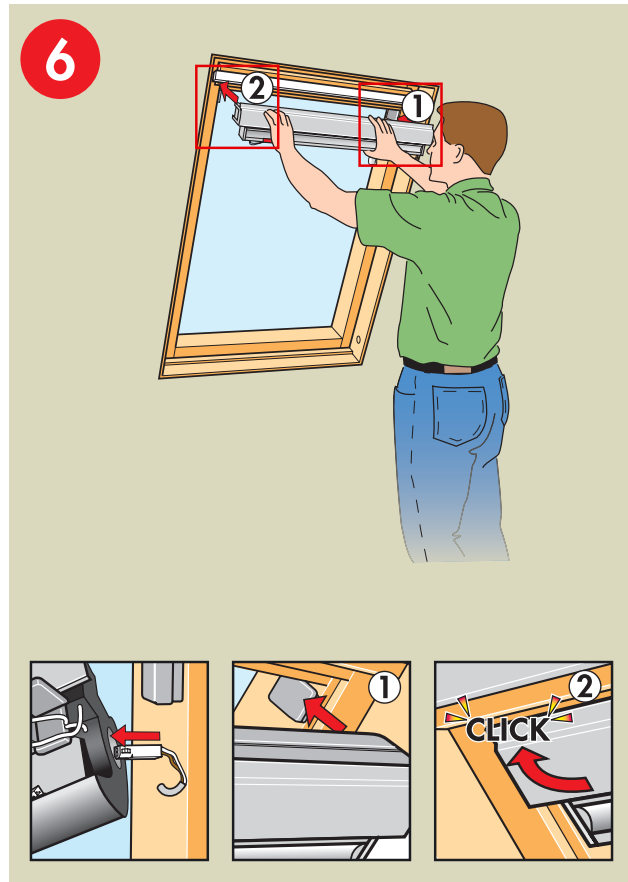
5



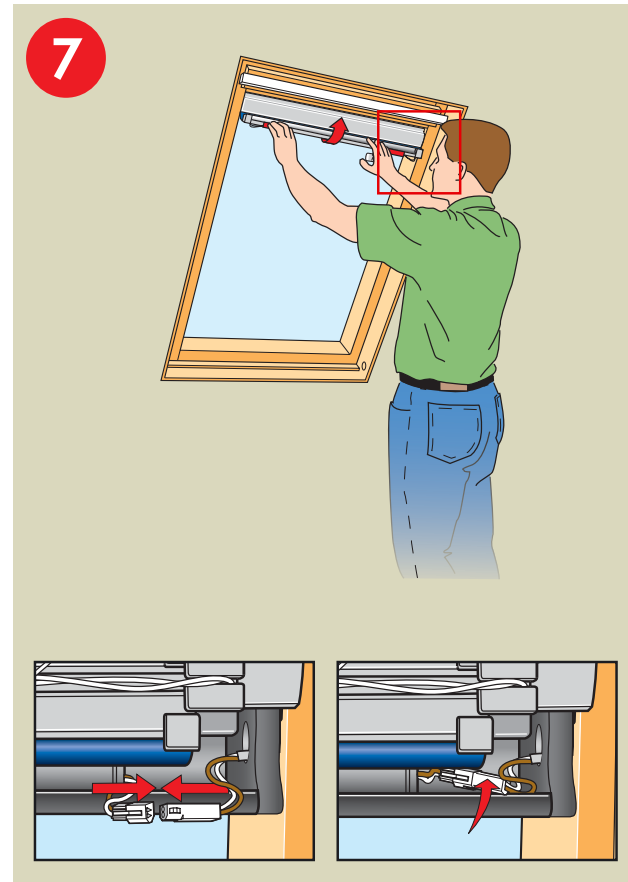
6



7



8



9

A: VELUX Österreich GmbH
☎ 02245/32 3 50

AUS: VELUX Australia Pty. Ltd.
☎ (02) 9550 3288

B: VELUX Belgium
☎ (010) 42.09.09

BG: VELUX Bulgaria EOOD
☎ 02/955 99 30

BiH: VELUX Bosna i Hercegovina d.o.o.
☎ 033/626 493, 626 494

BY: VELUX Roof Windows
☎ (017) 217 7385

CDN: VELUX Canada Inc.
☎ 1 800 88-VELUX (888-3589)

CH: VELUX Schweiz AG
☎ 062/289 44 44

CHN: VELUX (CHINA) CO. LTD.
☎ 0316-607 27 27

CZ: VELUX Česká republika, s.r.o.
☎ 531 015 511

D: VELUX Deutschland GmbH
☎ 0180-333 33 99

DK: VELUX Danmark A/S
☎ 45 16 45 16

E: VELUX Spain, S.A.
☎ 91 509 71 00

EST: VELUX Eesti OÜ
☎ 601 1046

F: VELUX France
☎ 0821 02 15 15
0,119€ TTC/min

FIN: VELUX Suomi Oy
☎ 09-887 0520

GB: VELUX Company Ltd.
☎ 0870 380 9593

H: VELUX Magyarország Kft.
☎ (06/1) 436-0530

HR: VELUX Hrvatska d.o.o.
☎ 01/6221 212

I: VELUX Italia s.p.a.
☎ 045/6173666

IRL: VELUX Company Ltd.
☎ 01 816 1616

J: VELUX-Japan Ltd.
☎ 03(3478)81 41

LT: VELUX Lietuva, UAB
☎ (85) 270 91 01

LV: VELUX Latvia SIA
☎ 7 27 77 33

N: VELUX Norge AS
☎ 22 51 06 00

NL: VELUX Nederland B.V.
☎ 030 - 6 629 629

NZ: VELUX New Zealand Ltd.
☎ 0800 650 445

P: VELUX A/S - Sucursal em Portugal
☎ 21 880 00 60

PL: VELUX-POLSKA Sp. z o.o.
☎ (022) 33 77 000 / 33 77 070

RA: VELUX Argentina S.A.
☎ 0 114 711 5666

RCH: VELUX Chile Limitada
☎ 2-231 18 24

RO: VELUX România S.R.L.
☎ 0-8008-83589

RUS: VELUX Russia ZAO
☎ (095) 737 75 20

S: VELUX Svenska AB
☎ 042/144450

SK: VELUX Slovensko, s.r.o.
☎ (02) 60 20 15 00

SLO: VELUX Slovenija d.o.o.
☎ 01 564 14 84

TR: VELUX Çatı Pencereleeri
Ticaret Limited Şirketi
☎ 0 216 302 54 10

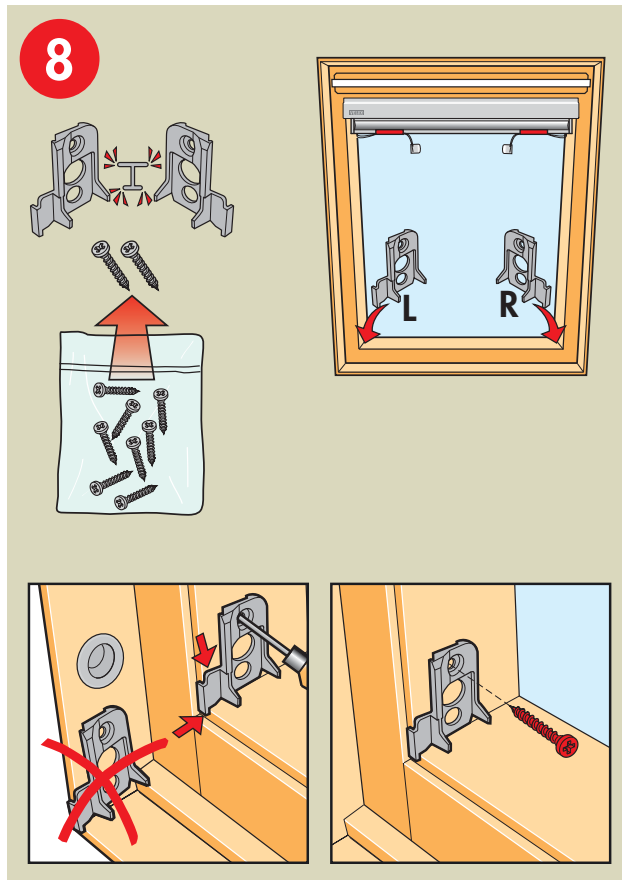
UA: VELUX Ukraina TOV
☎ (044) 490 5703

USA: VELUX America Inc.
☎ 1-800-88-VELUX

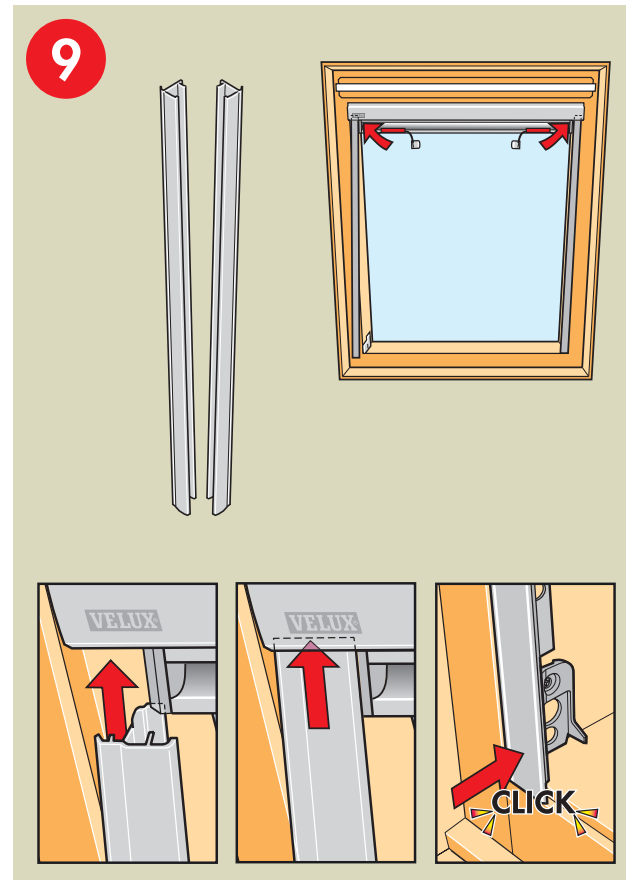
YU: VELUX Jugoslavija d.o.o.
☎ 011 3670 468

www.VELUX.com

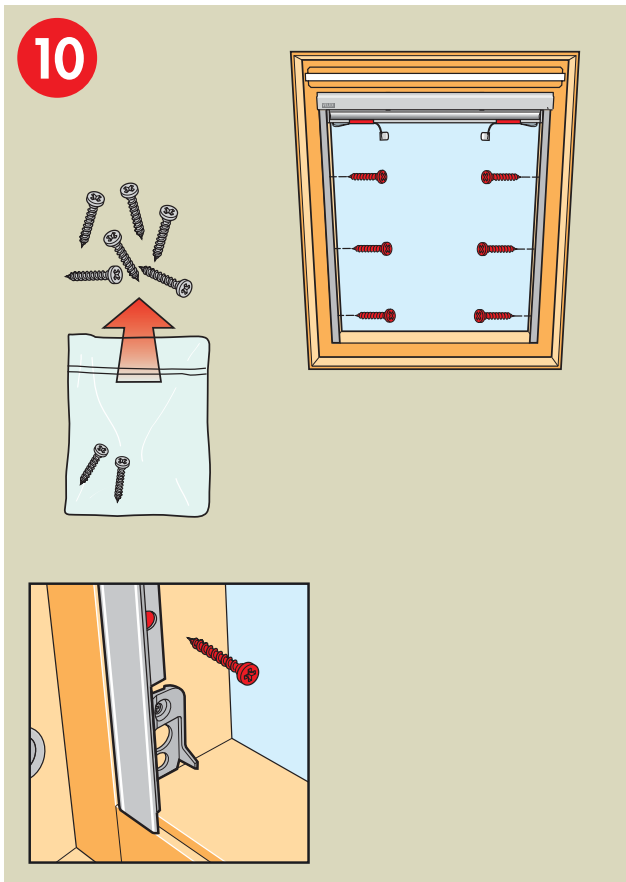
Installation instructions for DML/RML. Order no. VAS 451422-0305



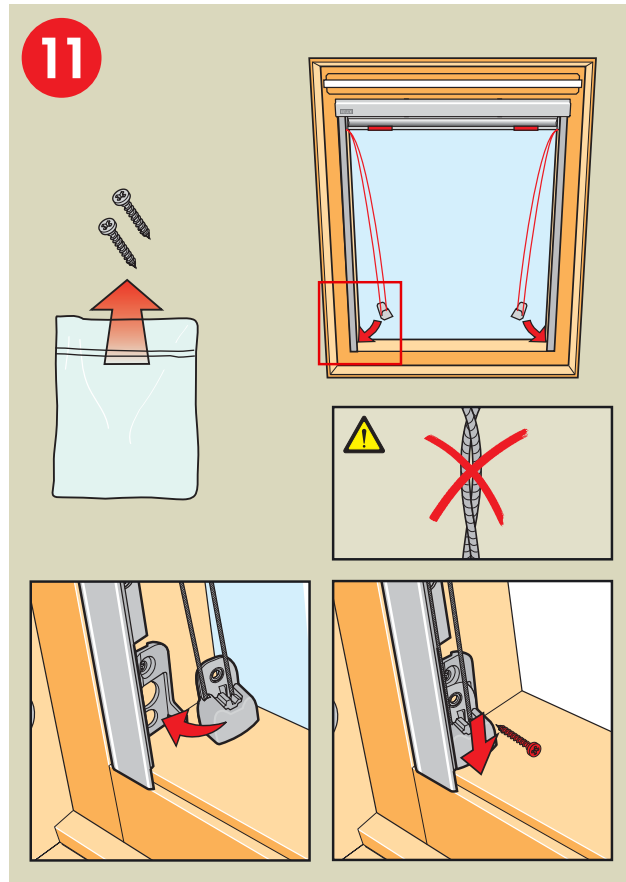
10



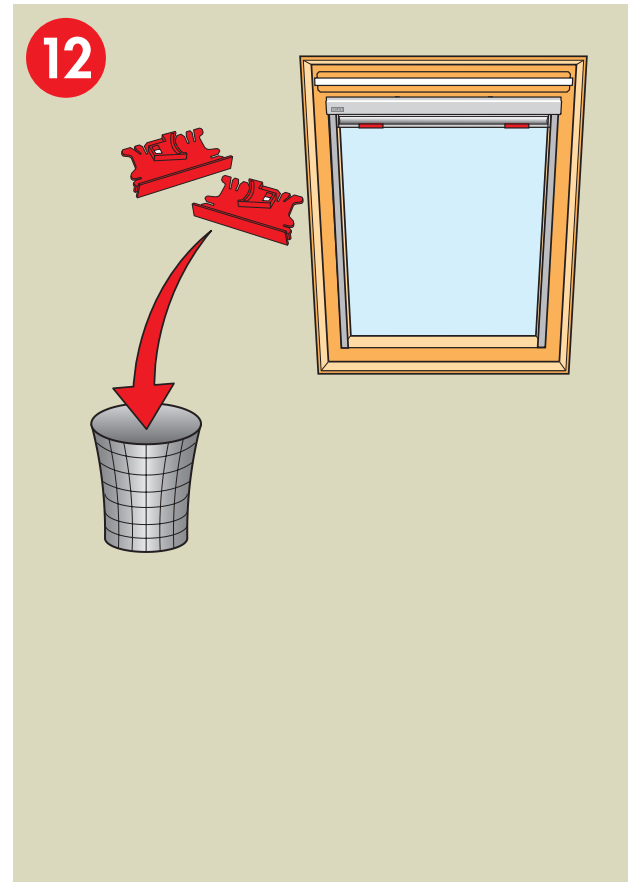
11



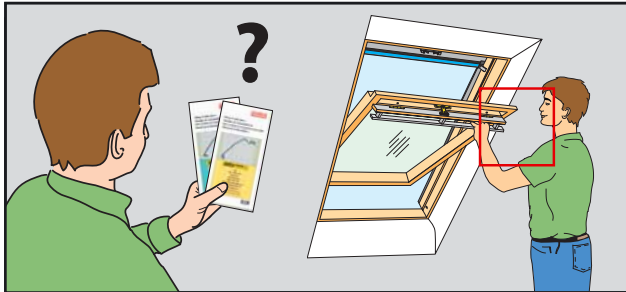
12



13



14



VELUX VELUX

B04
C01 • C02 • C04
F04 • F06
M04 • M06 • M08 • M10 • M12
P25 • P04 • P06 • P08 • P10
S01 • S06 • S08 • S10
U04 • U08 • U10
X99

064
101 • 102 • 104
204 • 206
325 • 304 • 306
308 • 310 • 312
425 • 404 • 406 • 408 • 410
601 • 606 • 608 • 610
804 • 808 • 810
1 • 2 • 3 • 4 • 5 • 6 • 7 • 8 • 9
10 • 11 • 13 • 14 • 31 • 999

